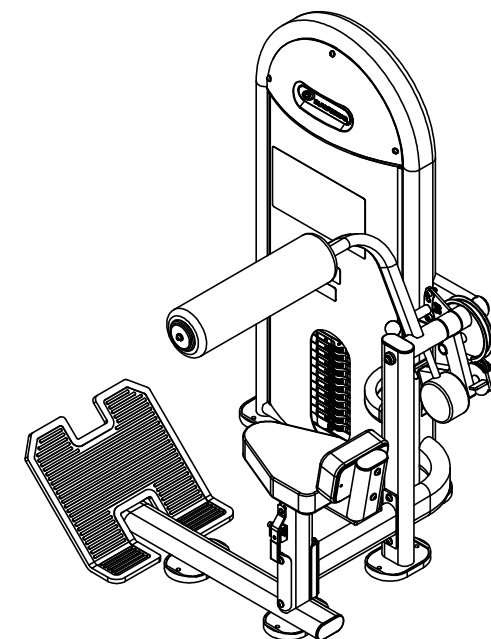
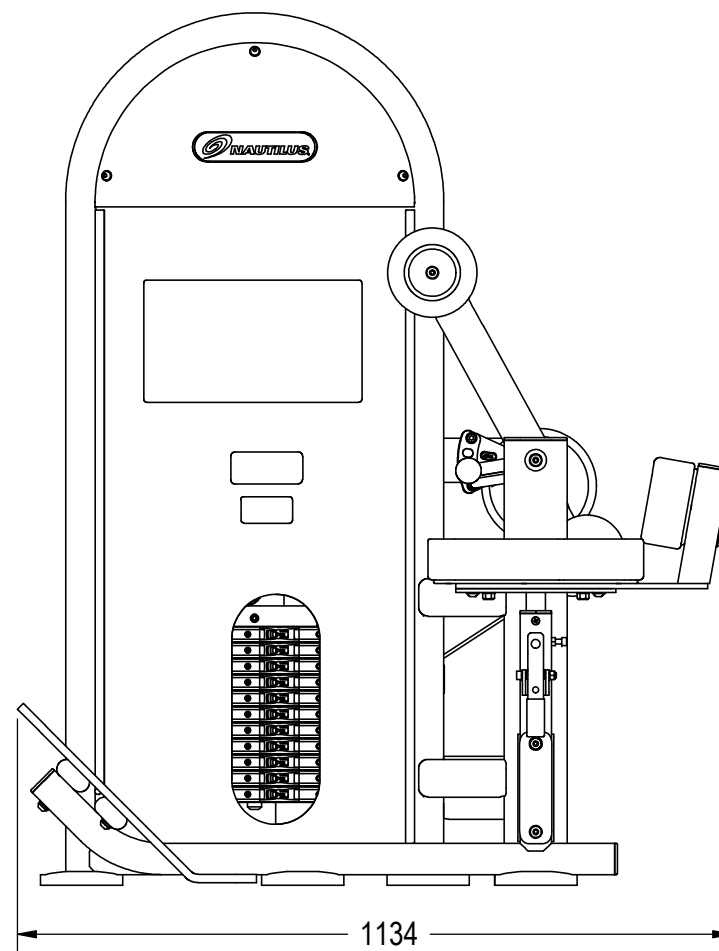
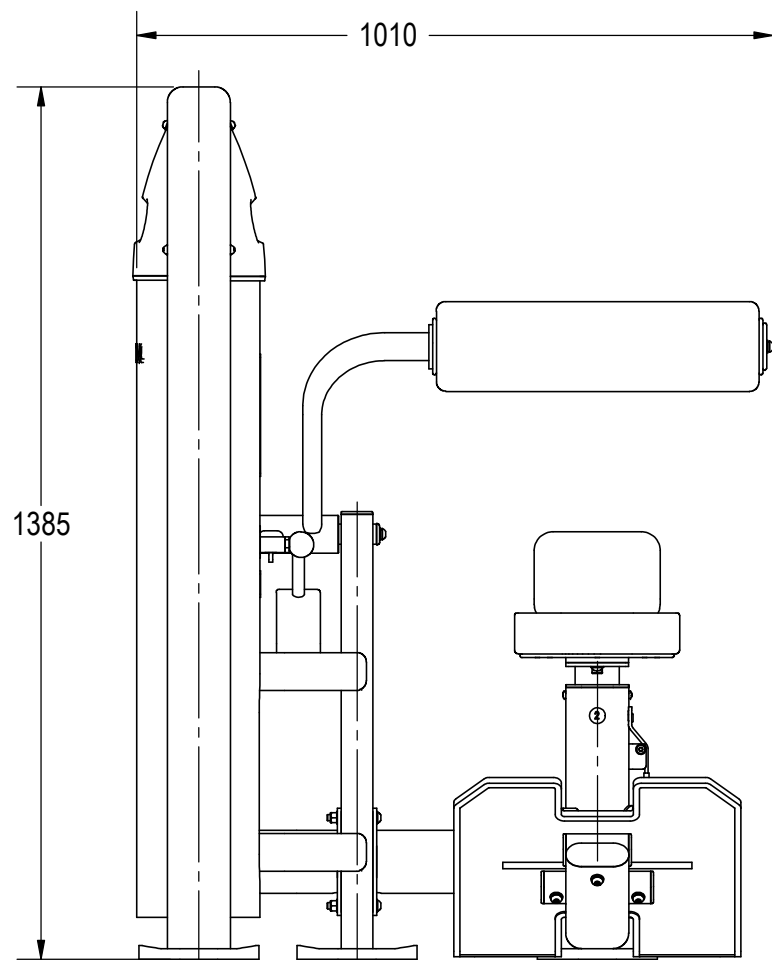


NOTES:

1. ASSEMBLE AND INSPECT PER SOP 620-7918..
2. INSTALL Kg STICKER AND AFFIX Lb STICKER TO INSIDE OF SHROUD WITH TAPE.
3. COLOR DICTATED BY THE SALES ORDER. REFERENCE THE MACHINES BOM FOR COMPONENTS CONTAINING -XX, -00XX AND -XXXX.
 - a. COLOR: -XX COLOR DESIGNATOR AS SPECIFIED IN SOP 620-8222.
 - b. THE -XX CAN RESULT IN ONE COLOR FOR THE METAL SHROUD AND A DIFFERENT COLOR FOR THE METAL FRAME ALSO WITH A -XX LISTED ON THE BOM.
 - c. THE -00XX IS THE COLOR DESIGNATOR FOR UPHOLSTERY. THE 5TH DESIGNATOR: "X" WITHIN -XXXXX DEFINES THE HEAD STRAP OR CUSTOM PRODUCTS BRAND. THIS IS SPECIFIED ON SALES ORDERS.
 - e. THE -XXXXX IS CREATED BY COMBINING THE -XX, -00XX AND THE 5TH DESIGNATOR.
 - f. ALL X'S SHOULD BE DEFINED ON THE SALES ORDER.

REVISION HISTORY

REV	DATE	DESCRIPTION	ECO	BY
A	7/29/2016	INITIAL RELEASE	15473	AM



DOCUMENT STATUS:

NOTICE OF PROPRIETARY INFORMATION

THIS DOCUMENT SHALL NOT BE REPRODUCED NOR SHALL THE INFORMATION CONTAINED HEREIN BE USED BY OR DISCLOSED TO OTHER EXCEPT AS EXPRESSLY AUTHORIZED BY CORE HEALTH & FITNESS, LLC.

CLASS OF WORK	UNLESS OTHERWISE SPECIFIED DIMS ARE IN mm. TOLERANCES FOR MEASURE OF LENGTH ARE:							ANGLES = ±2°
	0.5 to 3	>3 to 6	>6 to 30	>30 to 120	>120 to 400	>400 to 1000	>1000 to 2000	
FINE	±0.05	±0.05	±0.1	±0.15	±0.2	±0.3	±0.5	----
MEDIUM X	±0.1	±0.1	±0.2	±0.3	±0.5	±0.8	±1.2	±2
COARSE	±0.2	±0.3	±0.5	±0.8	±1.2	±2	±3	±4
VERY COARSE	----	±0.5	±1	±1.5	±2.5	±4	±6	±8

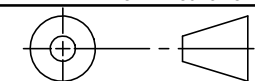
MATERIAL
SEE BOM

FINISH
SEE NOTES

VENDOR: **IMPULSE**

P/N: **IL-D6330C**

THIRD ANGLE PROJECTION



	INITIAL	DATE
DRAWN	AM	7/29/16
CHECKED		
APPROVED		

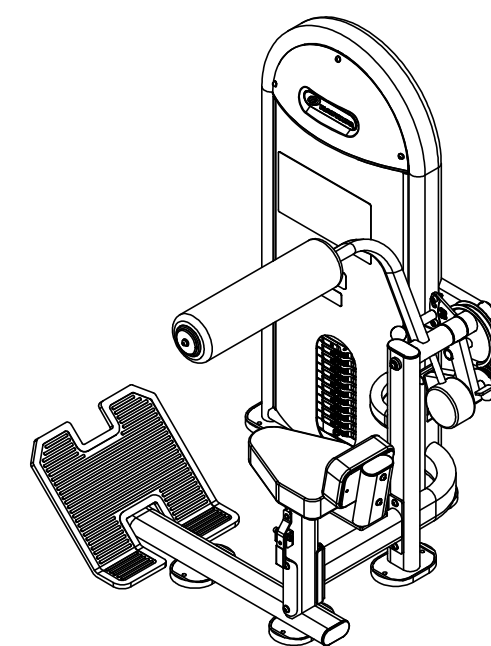
CORE HEALTH & FITNESS, LLC
4400 NE 77th Ave., Suite 300
Vancouver, WA 98662

CORE PART NO
NL-D6330-29AGS REV **A**

TITLE
NL,DSS,ABS/LOW BACK,LNL

SCALE: 1:10 SHEET 1 OF 3 SHEET SIZE: B

9		8			7		6		5		4		3		2		1			
J	ITEM NO.	PART NUMBER	DESCRIPTION		Q'TY.	ITEM NO.	PART NUMBER	DESCRIPTION		Q'TY.	ITEM NO.	PART NUMBER	DESCRIPTION		Q'TY.	ITEM NO.	PART NUMBER	DESCRIPTION		Q'TY.
		1	050-5457	Label, S/N, Non-Powered, Primary, Core H&F			1	45	730-0907	WASHER,M10,SPLIT,LOCK		5	46	730-0908	WASHER,PLAIN,M10,SS		33	47	730-0910	WASHER,PLAIN,M8,SS
	2	730-0194	PAD,SEAT,IN-B7201		1	48	730-0911	SPING,COMPRESSION ,ADJ,HDL		1	49	730-0930	WELD,HANDLE,EXTENSION,ADJ		1	50	730-0935	GRIP,SQUARE,ADJ HANDLE		1
	3	730-0199	CAP,FLAT,ELLIPSE TUBE,100X50		4	51	730-0936	ASSY,TUBE,INSERT,SLEEVE		2	52	730-1055	PAD, KNEE, IN-S1011		1	53	730-1098	PULLEY ASSY,CABLE,DIA 89MM		5
I	4	730-0200	END CAP,KNEE PAD,75X10.5		1	54	730-1103	NUT,M18X1.25,NYLOC,SS		3	55	730-1104	NUT,M10X1.5,NYLOC,SS		12	56	730-1109	SCREW,M10X1.5,80MM,BHC,HE,SS		5
	5	730-0207	BASE,FEET REST,IN-D7502		1	57	730-1112	SCREW,M10X1.5,130MM,BHC,HE,SS		2	58	730-1118	SCREW,M10X1.5,30MM,BHC,HE,SS		6	59	730-1120	SCREW, M10x40, BH, SS		2
	6	730-0216	PAD, FEET, BASE, IN-B7503		5	60	730-1131	SCREW,M10X50,BHC,SS		5	61	730-1138	SCREW,M8X1.25,20MM,BHC,HE,SS		6	62	730-1216	BUMPER,SHAFT 25 IDX 48 MM		1
	7	730-0233	SHROUD,REAR,WGT STK,LP		1	63	730-1253	SCREW,M10X1.5,105mm,BHC,SS		1	64	730-1329	SHROUD,LNL,D6330		1	65	730-1397	WSA-LNL,110LB,11H		1
	8	730-0257	INSERT,OVAL,IN-D1015		4	66	730-1488-01	STICKER,ADJUST FUNCTION,INSTRUCTION		1	67	730-1488-02	STICKER,ADJUST FUNCTION,INSTRUCTION		1	68	730-1491	LABEL,INSTRUCTIONS,LOCK N LOAD		1
H	9	730-0308	ASSY,SPING PIN LONG,IN-D6330		1	69	730-2112	WASHER,M8,SPLIT,LOCK		2	70	730-2133	SCREW,M4X0.7,15MM,SHCS,HE,SS		1	71	730-2148	WELDMENT,SEAT,ADJUSTMENT FRAME		1
	10	730-0309	UPHOLSTERY,BACK,PAD		1	72	730-2150	CABLE ASSY, LOWER, IN-D6330 (1050mm)		1	73	730-2151	CABLE ASSY, IN-D6330,UPPER		1	74	730-2165	BRACKET,MOVING,PULLEY		1
	11	730-0384	LOGO,INSTINCT		1	75	730-7255-XXX	STICKER, PLACARD, INSTRUCTION, LLLP, NAUT.		1	76	731-0335	STICKER, MADE IN CHINA, IP		1	77	731-7311	STICKER,NAUTILUS,DECO,45MMX191MM		2
	12	730-0385	STICKER,CAUTION,PINCH POINT		2															
	13	730-0562	BUMPER, STACK, 60mm		2															
G	14	730-0565	CAP,RUBBER,ROD GUIDE WT STK		2															
	15	730-0647	WEIGHT STACK AND SUPPORT,FRAME		1															
	16	730-0648	ABS/LOW BACK,PIVOT,ARM		1															
	17	730-0649	PIVOT,PULLEY,ARM		1															
	18	730-0650	ROTARY CAM		1															
	19	730-0651	CONNECTING,SUPPORT,FRAME		1															
F	20	730-0652	ASSY,MAIN FRAME		1															
	21	730-0654	FRAME,BACK PAD,SUPPORT,BRACKET		1															
	22	730-0655	ROM,STOPPER,IN-D6330		1															
	23	730-0656	CAP,50MM OD		1															
	24	730-0660	BUMPER,LEVERAGE ARM,STOPPER		1															
E	25	730-0662	WEIGHT STACK,GUIDE RAIL		2															
	26	730-0668	SHAFT,M25X338		1															
	27	730-0670	SPACER,M51 IDX90 OD		1															
	28	730-0671	LEVERAGE ARM,COUNTER BALANCE		1															
	29	730-0673	BEARING,OD 47, ID 25,THK 12		6															
D	30	730-0674	RETAINING,SNAP,FOR HOLE DIA 47 MM		1															
	31	730-0678	CAP,34MM OD		1															
	32	730-0679	STOPPER, OD 17MM, HGH 10.5MM		2															
	33	730-0681	PLUG,KNEE PAD,90X51		1															
	34	730-0702	SHROUD,TOP,LP		2															
C	35	730-0845	SPEED NUT,U-STYLE CLIP-ON NUT,M8		6															
	36	730-0869	RETAINING RING,25MM ID,32MM OD		2															
	37	730-0870	SCREW,M10X1.5,25MM,FHMS,HE,SS		3															
	38	730-0883	NUT,M10X1.5,HEX,JAM,SS		1															
B	39	730-0885	NUT,M6X1.0,JAM,HEX,SS		2															
	40	730-0890	SCREW,M8X1.25,25MM,SHCS,HE,SS		4															
	41	730-0891	SCREW,M8X1.25,30MM,SHCS,HE,SS		1															
	42	730-0892	SCREW,M8X1.25,55MM,SHCS,HE,SS		1															
	43	730-0896	SCREW,M8X1.25,16MM,SET,FPS,HE,SS		2															
A	44	730-0899	Screw, M6x1.0, 12mm, PHM, PH, SS		2															

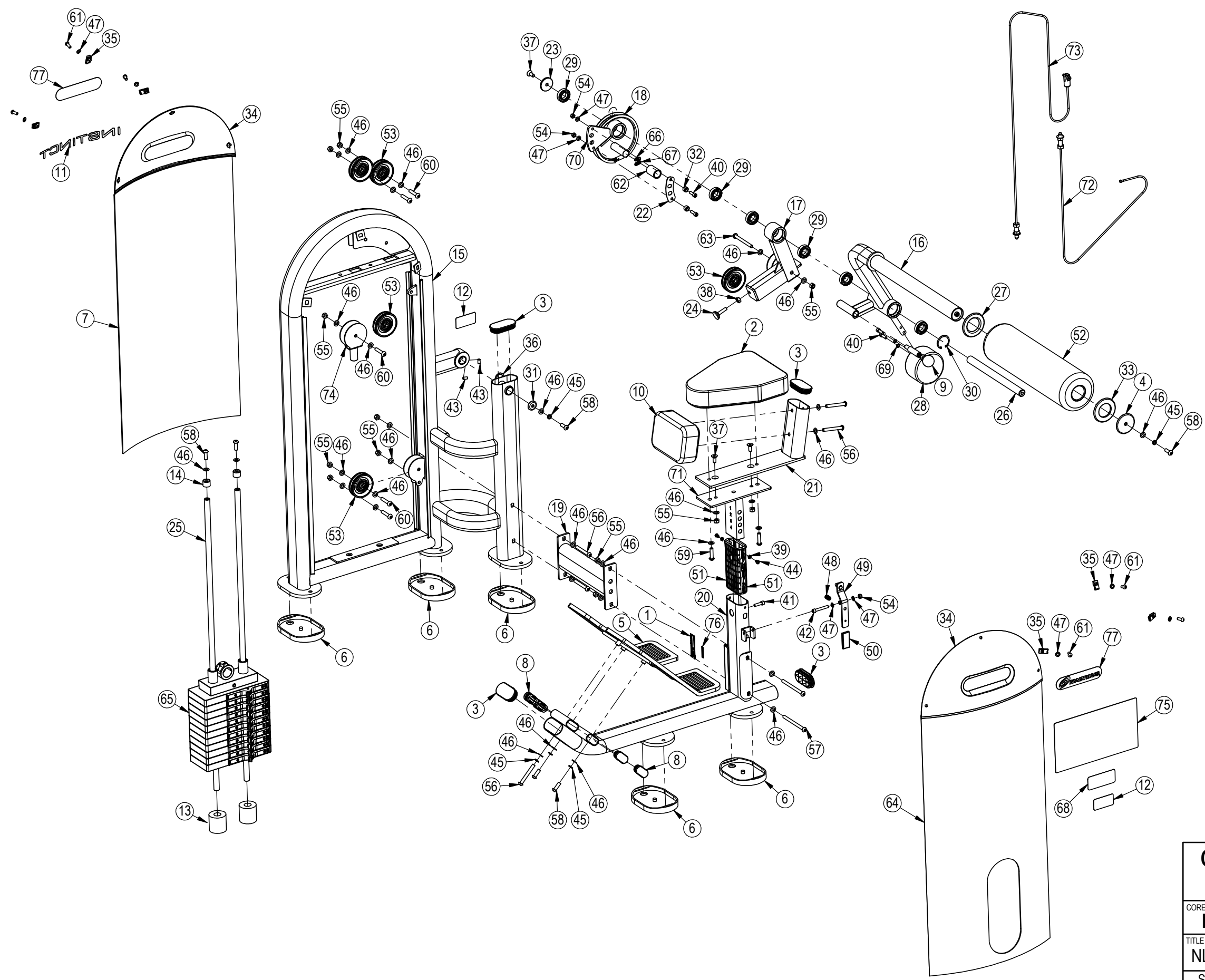


CORE HEALTH & FITNESS, LLC
4400 NE 77th Ave., Suite 300
Vancouver, WA 98662

CORE PART NO: **NL-D6330-29AGS** REV: **A**

TITLE: **NL,DSS,ABS/LOW BACK,LNL**

SCALE: 1:20 SHEET 2 OF 3 SHEET SIZE: B



CORE HEALTH & FITNESS, LLC		
4400 NE 77th Ave., Suite 300 Vancouver, WA 98662		
CORE PART NO	NL-D6330-29AGS	REV A
TITLE NL,DSS,ABS/LOW BACK,LNL		
SCALE: 1:14	SHEET 3 OF 3	SHEET SIZE: B